

Perfectmatch



Award Winning Lapel Pins since 1985

PIN RESOURCE GUIDE

5 Day Digital

Page 15

Soft Enamel

Page 12-13

Cloisonné

Page 8-9

Digital Print

Page 14-17

Patches

Page 22-23

Employee Recognition

Page 18-19

Color Wood

Page 14



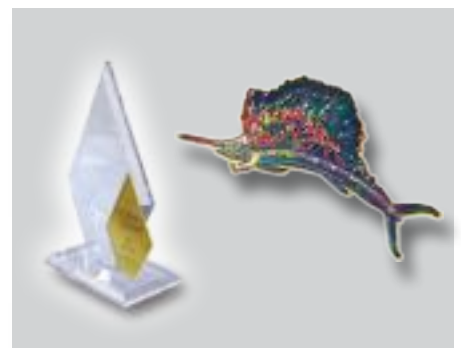
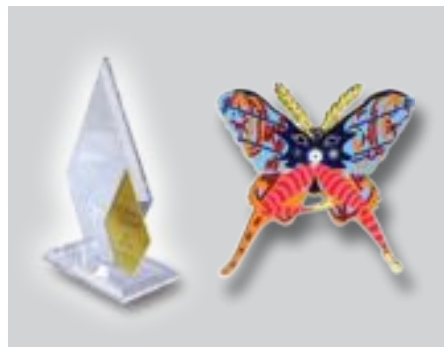
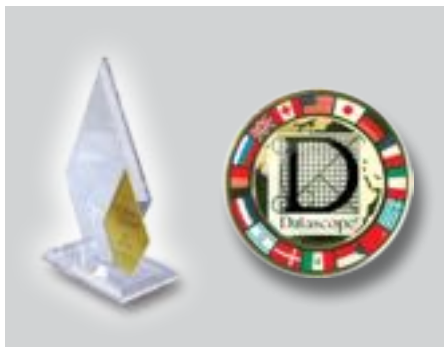
2023

Awards & American Patriotic Pins

Proud Winner of 20 Product Awards
at the PPAI Contest



Years of Award Winning Quality & Customer Service Excellence



American Pride Lapel Pins & Patches

Your one stop source for high quality patriotic American flag pins and 100% embroidered emblems.

All items are available with same day shipping. This is a great way for a corporation, medical center, or bank to show corporate identity and American patriotism.

\$ 3.50 (P)



American Flag Patches

sew on backing

Large 3 1/2 x 2 1/4 inches \$ 3.50 (P)

Small 2 1/2 x 1 5/8 inches \$ 2.60 (P)

MOQ 100pc

\$ 2.60 (P)

MOQ 100pieces



Stock & Custom Awareness Ribbons

Available with a custom logo digital imprint on our new aluminum stock shape. 1 1/4" from top to bottom. See page 15-17 for custom prices. optionally available in 5 days.




\$ 1.80 (P)

Photo Etch USA #1
1" point to point 14k Gold Plate
Same day shipping - MOQ 100pc



\$ 1.60 (P)

USA #13
Stock Patriotic Aluminum Ribbon
1.25" from top to bottom
Same day shipping - MOQ 100pc



\$ 1.80 (P)

Photo Etch USA #5
1" top to bottom 14k Gold Plate
MOQ 100pc



Photo Etch USA #2
1" point to point 14k Gold Plate
3-week production, Priced as PhotoEtch
[See page 16](#)



\$ 1.80 (P)

Stock Pink and Yellow Ribbon
1.25" from top to bottom
Same day shipping - MOQ 100pc



\$ 2.80 (P)

Custom Color Ribbons - No Logo
1.25" from top to bottom
5-Day production - MOQ 100pc Not all PMS colors available

Products At A Glance...



LASERED CLOISONNÉ on HARD FIRED CLOISONNÉ

Cloisonné enamel without metal around each color. This process reproduces the smallest details not possible with any other process. Any design can be reproduced using lasered cloisonné without metal around each color and without having to adapt the emblem to the process.

High Polish 14K Gold or Platinum plate.

Pages 6-7



HARD FIRED CLOISONNÉ

Each design is stamped into brass. The recessed areas are inlaid with a cloisonné paste made of water and a powder of finely ground colored glass. Then fired at a high temperature until the glass fuses to the metal. The result is then carefully polished until the surface of the glass is level with the metal.

High Polish 14K Gold or Platinum, Antique Gold or Bronze plate

Pages 8-9



HIGH POLISHED METAL

Featuring **DULL MATTE, STIPPLED** or **FLORENTINE** backgrounds.
MINIATURE BADGES

Die struck to show the beautiful contrast between the polished metal and the textured background. Especially attractive when combined with cloisonné or soft enamel color. Cloisonné is level with the polished metal. Dull Matte, Stippled or Florentine are three optional finishes for the background.

Pages 10-11



SOFT ENAMEL (Die Struck)

Die struck metal has the same thickness as used for cloisonné. The recessed areas are color filled with dull or glossy soft enamel. We highly recommend dull soft enamel, because it creates more contrast between the raised polished metal and the recessed enamel. PMS color match at no additional charge.

Pages 12-13



CUSTOM SHAPE DIGITAL

Custom shape with epoxy dome

Great inexpensive process for art with many colors and gradations, digitally printed on aluminum, custom shapes and epoxy dome is standard on this easy colorful process. Required art JPG 300dpi. Options include thick aluminum or stainless steel metal.

Pages 16-17



DIGITAL PRINTING

Digital printing on custom or stock shapes, aluminium, stainless steel or diestruck cloisonne traditional pins.

This process is great for complicated designs and logos.

Pages 16-17



PATCHES & APPLIQUES

Computer embroidered patches and appliques, with up to 7 thread of colors included.

Pages 22-23



PVC Pins & Charms

Popular for decorating cell phones, MP3 players and backpacks.

If you need a logo seen by a younger demographic, this is your hip new ticket!

Pages 20



GENUINE CHENILLE

Chenille letters, numbers and logos are used by educational institutions, professional, amateur and youth sports. Applied to uniforms and "letterman" jackets.

Washable, dry-cleanable and extremely durable.

Pages 23



3D CASTINGS

Our custom hand poured casts offer 3D high definition details in a variety of metal platings.

Available in push pins and lapel pins.

Call for quote



5-DAY pins are back



Digital printing on our stock aluminum or traditional cloisonne diestruck pieces. Rich, vibrant color. Ready in days rather than weeks.

Now available with our new SUPERSIZED Aluminum shapes.

Pages 15



EMPLOYEE RECOGNITION

5-DAY stock or custom solutions Easy mix-n-match number pins in stock and ready to ship with

5-DAY NERP style in stock

We got you covered.

High Polish 14K Gold plate.

Page 20-21



COLOR PRINTED WOOD LAPEL PINS

4 color printing on natural wood pins. Create attention getting promotional pins on stock shapes.



LASER ENGRAVED WOOD LAPEL PINS

Communicate words like "GREEN" & "ENVIRONMENT." Create attention getting promotional pins from 5 stock shapes. Create a true one of a kind promotion with an optional custom shape.



Page 14



Page 25

ATTACHMENTS & PACKAGING

Let us customize your emblem to match any occasion. Pieces can easily be made into any of the following: key chains, book marks, cuff links, eyeglass holders, earrings, shoe tags, money clips, bolo ties, necklaces, golf ball markers, safety pins, stick pins and zipper pulls. If you don't see what you're looking for, we can make the Perfectmatch for you.

Golf Ball Markers

Available in 5 day Digital Printing.

We also stock several wonderful box and packaging options for your emblematic jewelry.

Pages 32, 36-37

Lasered Cloisonné





Lasered Cloisonné

Cloisonné Enamel without metal around each color - Available with any attachment.
Push Pin and/or Emblematic Pin

	Size	100	300	500	1,000	3,000	5,000
LC 1	1/2"	5.20	3.04	2.42	2.30	2.24	-
LC 2	5/8"	5.62	3.20	2.60	2.54	2.52	-
LC 3	3/4"	5.58	3.40	2.86	2.74	2.70	-
LC 4	7/8"	6.10	3.72	3.04	3.02	2.96	-
LC 5	1"	6.50	4.04	3.50	3.36	3.32	-
LC 6	1 1/4"	7.24	4.62	4.12	3.70	3.50	-
LC 7	1 1/2"	8.00	5.20	4.74	4.02	3.66	-

(6P)

The above prices include FOUR COLORS either Lasered or Cloisonné. Background counts as one color.
Add \$ 0.16 (p) per each additional color.

- TOOLING CHARGE:** *none if stock shape pg. 35
Tooling charge for interior design & each change
1" and under \$ 120.00
1-1/2" and under \$ 160.00
Center Cut-Out each hole \$ 60.00
Loop Tooling Charge \$ 60.00 (4R)
- LASER SETUP CHARGE:** \$ 80.00 (p) per each color
FULL 4 COLOR Setup charge \$ 180 (p)
- PLATING:**
14K Gold, Platinum or Copper plate
[See page 24 for other plating options](#)
- NORMAL PRODUCTION TIME:**
Typically 4 weeks after PO and proof approval.
- LESS THAN MINIMUM:** Under 100 add \$ 200.00 (P)
- OPTIONAL ATTACHMENTS:**
[See Attachment section on page 26-27](#)

Hard Fired Cloisonné





Hard Fired Cloisonné

Cloisonné colors are separated by a thin line of metal. Colors are flush with metal.

	Size	100	300	500	1,000	3,000	5,000
PC 1	1/2"	5.10	2.96	2.22	2.20	2.14	2.10
PC 2	5/8"	5.52	3.18	2.50	2.48	2.46	2.40
PC 3	3/4"	5.66	3.30	2.78	2.64	2.60	2.56
PC 4	7/8"	6.00	3.62	2.96	2.92	2.90	2.86
PC 5	1"	6.40	3.96	3.28	3.26	3.22	3.20
PC 6	1 1/4"	7.48	4.86	4.18	4.14	4.12	4.10
PC 7	1 1/2"	8.26	5.36	4.90	4.86	4.84	4.82

(6P)

For larger sizes or quantities please contact customer service.

- TOOLING CHARGE:**
Tooling Charge for interior design & each change
1" and under \$ 120.00
1-1/2" and under \$ 160.00
Center Cut-Out each hole \$ 60.00
Loop Tooling Charge \$ 60.00 (4R)
- ADDITIONAL COLORS:** Prices include 4 colors
For each additional color add \$.20 (R)
- Combination plating & dyed black is not available
- PLATING:** 14K Gold, Platinum or Copper plate
[See page 34 for plating options](#)
- NORMAL PRODUCTION TIME:**
Typically 4 weeks after PO and proof approval.
- LESS THAN MINIMUM:** Under 100 add \$ 200.00 (P)
- OPTIONAL ATTACHMENTS:**
[See Attachment section on page 26-27](#)

High Hand Polished Metal

Dull Matte



Dull Matte with Hard Fired Cloisonné



Dull Matte with Soft Enamel



Perfectmatch

Combination of 14K Gold and Platinum Plating



High Hand Polished Metal

With Dull, Stippled or Florentine Background - with or without colors.

	Size	100	300	500	1,000	3,000	5,000
PM 1	1/2"	5.16	3.00	2.26	2.22	2.20	2.16
PM 2	5/8"	5.58	3.32	2.62	2.50	2.46	2.42
PM 3	3/4"	5.88	3.64	2.86	2.74	2.68	2.66
PM 4	7/8"	6.50	4.34	3.26	3.24	3.22	3.18
PM 5	1"	7.14	4.76	3.72	3.70	3.64	3.62
PM 6	1 1/4"	8.84	6.16	4.94	4.92	4.90	4.86

(6P)

For larger sizes or quantities please contact customer service.

- TOOLING CHARGE**
Tooling Charge for interior design & each change
1" and under \$ 120.00
1-1/2" and under \$ 160.00
Center Cut-Out each hole \$ 60.00
Loop Tooling Charge \$ 60.00 (4R)
- ADDITIONAL COLORS:** Prices include 4 colors
For each additional color add \$.20 (R)
*Specify: cloisonné or soft enamel color
- PLATING:** 14K Gold, Platinum or Copper plate
[See page 34 for plating options](#)
- COMBINATION METAL:**
For combination of 14K Gold and Platinum plating on the same pin add \$ 0.12 (R)
- NORMAL PRODUCTION TIME:**
Typically 4 weeks after PO and proof approval.
- LESS THAN MINIMUM:** Under 100 add \$ 200.00 (P)
- OPTIONAL ATTACHMENTS:**
[See Attachments section on page 26-27](#)

Soft Enamel-Die Struck



Perfectmatch



Soft Enamel

Die struck Soft Enamel with or without epoxy dome. Colors are recessed in die struck metal.

	Size	100	300	500	1,000	3,000	5,000
SE 1	1/2"	4.56	2.68	2.20	2.12	2.08	-
SE 2	5/8"	4.66	2.80	2.48	2.26	2.18	-
SE 3	3/4"	4.76	2.90	2.76	2.34	2.30	-
SE 4	7/8"	4.90	3.02	3.00	2.46	2.40	-
SE 5	1"	5.02	3.12	3.08	2.58	2.52	-
SE 6	1 1/4"	6.04	5.14	4.02	3.76	3.70	3.62
SE 7	1 1/2"	7.14	6.22	5.10	5.82	4.78	4.72

For larger sizes or quantities please, contact customer service.

(6P)

- TOOLING CHARGE:**
Tooling Charge for interior design & each change
1" and under \$ 120.00
1-1/2" and under \$ 160.00
Center Cut-Out each hole \$ 60.00
Loop Tooling Charge \$ 60.00 (4R)
- ADDITIONAL COLORS:** Prices include 4 colors
For each additional color add \$ 0.12 (R)
- Dyed color plating available
- EPOXY DOME:**
1" and under add \$ 0.12 (R) Each
Over 1" add \$ 0.22 (R) each
- PLATING:** 14K Gold, Platinum or Copper plate
[See page 34 for plating options](#)
- NORMAL PRODUCTION TIME:**
Typically 4 weeks after PO and proof approval.
- LESS THAN MINIMUM:** Under 100 add \$ 200.00 (P)
- OPTIONAL ATTACHMENTS:**
[See Attachments section on page 26-27](#)



Made in USA
4 COLOR DIGITAL PRINTING

Digital Printing on Wood Pins

	Size	50	100	300	500
LW 1	Rectangle 1" x 1 1/2"	6.22	4.62	4.16	3.44
LW 2	Oval 1" x 1 1/2"	6.22	4.62	4.16	3.44
LW 3	Square 1"	4.82	4.58	3.92	3.48
LW 4	Round 1"	4.82	4.58	3.92	3.48
LW 5	Oval Small 1" x 5/8"	4.64	4.58	3.92	3.48

(4P)

Price stock wood pin with military clutch, pins individually poly bagged.

1. LASER ENGRAVING: Add \$ 0.90 (P)
2. SETUP CHARGE: \$ 120.00 (P)
REPEAT SETUP CHARGE: \$ 80.00 (P)
3. CHECK STOCK AVAILABILITY FOR 5-DAY orders !!!
4. LESS THAN MINIMUM: Under 50 add \$ 200.00 (P)
5. NORMAL PRODUCTION TIME: 5 days
Production time depend on actual production load.
6. Wood is organic, not all styles or colors are always available.

Perfectmatch



Made in USA

4 COLOR
DIGITAL
PRINTING



5 DAY digital prints 4 Color digital on select stock shapes

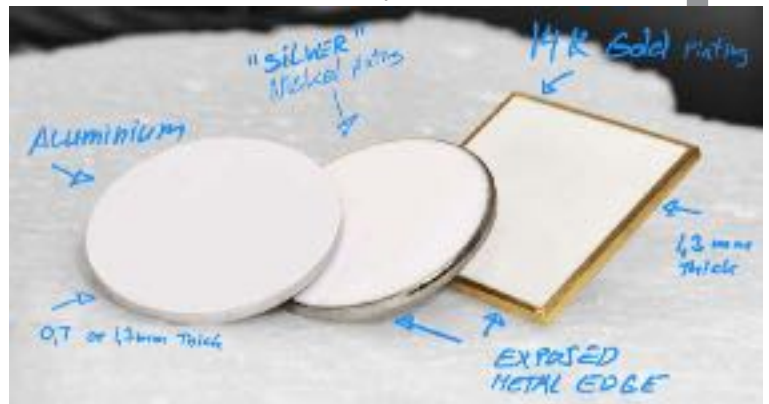


Made in USA

4 Color process imprinting on custom aluminum or diestruck stock shapes

	Size	100	300	500	1,000
5DAY-075	3/4"	4.82	3.88	3.72	3.68
5DAY-100	1"	5.02	4.08	3.92	3.88
5DAY-125	1 1/4"	5.22	4.28	4.12	4.06
5DAY-200	2"	inquire			

(4P)



1. STOCK SHAPES:
[See page 35 for stock sizes and shapes](#)
2. SETUP CHARGE: \$ 100.00 (P)
REPEAT SETUP CHARGE: \$ 60.00 (P)
3. LESS THAN MINIMUM: Under 100 add \$ 100.00 (P)
4. PLATING: Standard Aluminum finish
Material: Standard 0.8 or 1.3 mm Aluminum.
Diestruck brass gold or nickel plate 0.24 ea (P)

5. NORMAL PRODUCTION TIME: 5 days
* Production load dictates actual time
6. PreProduction sample not available
Will call is general not available.

Digital Printing on Stock & Custom shape



One of Our Most Popular Processes

Digital Printing provides 4-color process, without the hefty color setup charges.

Vibrant color and high resolution with good details.

Custom shapes or use a stock shape to save the custom shape tooling charge.

* 5-DAY see page 15





POPULAR

Digital Printing FULL color on Stock & CustomShapes

4 Color Process imprinting on our stock Cloisonné and Aluminum Shapes. Push Pin and/or Emblematic Pin

	Size	100	300	500	1,000
4PC 1	1/2"	5.52	3.20	3.10	3.05
4PC 2	5/8"	3.56	3.32	3.26	3.20
4PC 3	3/4"	3.82	3.52	3.46	3.36
4PC 4	7/8"	4.00	3.64	3.34	3.44
4PC 5	1" & 1 1/4"	4.16	3.80	3.56	3.46
4PC 8	2"	6.10	5.64	5.32	Call for larger quantities

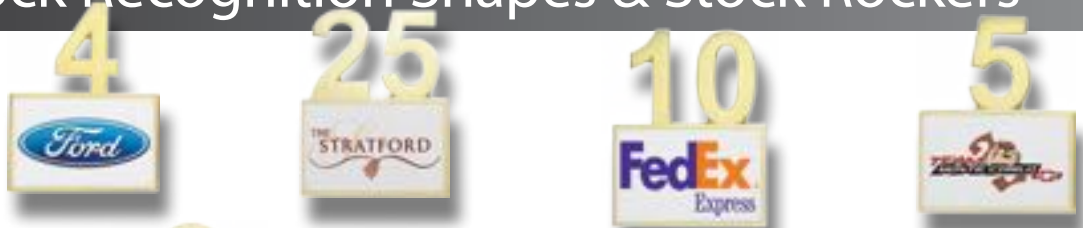
(5P)

Need it faster? [See page 15 for 5 DAY](#) on stock shapes.

- STOCK SHAPES:
[See page 25 for stock sizes and shapes](#)
- SETUP CHARGE: \$ 100.00 (P)
REPEAT SETUP CHARGE: \$ 60.00 (P)
CUSTOM SHAPE tooling up to 1" \$ 150 (P)
CUSTOM SHAPE tooling up to 1.5" \$ 200 (P)
- LESS THAN MINIMUM: add \$ 160.00 (P)
- EPOXY DOME: \$ 0.18 ea (p)
- PLATING:
Aluminum , 14K Gold or Platinum plate
- NORMAL PRODUCTION TIME: 4 week
- imprint may drift slightly art should have bleed

Employee Recognition

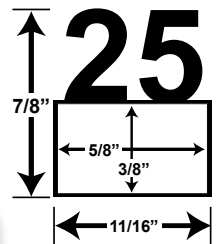
5DAY Stock Recognition Shapes & Stock Rockers



Number Employee Recognition Pins - NERP

Four color imprinting on 100% genuine hard fired cloisonné. Our NEW number employee recognition stock shapes give you the benefit of custom orders without the custom die charges. Available in numbers 1 thru 10, 15, 20, 25, 30, 35 and 40. Digital Printing Process Only.

Certain artwork restrictions apply for orders with full bleeds and tight border margins, which may require additional setup charges.



1-50 Years available in stock
Gold plate 7/8" tall x 5/8" wide

STOCK ROCKERS



Custom Shape Pins with engraved numbers

(mix numbers freely)



Use YOUR art / LOGO with laser engraved years of service numbering

When placing a pin order, advise if you will be adding stock tabs, so we may correctly position the backside post, we recommend long posts. Minimum order 100 pieces - Less than minimum \$100.00 (P)

Gold with black colorfill \$ 3.60 (P)

Perfectmatch

optional stone insert



A beautiful deep laurel wreath stamping, on extra thick metal gives the pin a "significant" feel. Carefully polished to an ultra smooth finish and plated with 14K gold, this pin feels high end when you hold it. Digital imprinting on white enamel colorfill



We recommend adding the optional PB box for an even more exclusive presentation. \$ 1.40 (P)



EMPR Rectangle

LASER ENGRAVED NUMBERING INCLUDED
Mix & Match numbers at no attitional cost
Laser engraving is colored black for contrast.
*Optional stone insert available in quantity



EMPR Round



Employee Recognition Stock Shapes

Photo Reproduction or Digital Printing on our NEW stock design and Classic Employee Recognition pin. 14K Gold plate laurel wreath and NEW number design. Both available with 4 color imprinting.

	Size	50	150	300	500
5-DAY NERPS - DIGITAL STOCK SHAPES	7/8th "	6.52	4.46	4.10	3.98
EMPRect- Digital printing rectangle	1"	6.52	4.46	4.10	3.98
EMPRound- Digital printing rectangle	1"	6.52	4.46	4.10	3.98

1. PRODUCTION TIME: 4 weeks
2. PLATING: 14k Gold
3. EPOXY DOME:
Available for EMPR style only. Add \$ 0.80 (P) each.
4. OPTIONAL:
Platings and or Died white or black process
Contact customer service for pricing
5. SETUP CHARGE:
EMPEct & EMP-Round: \$ 100.00(P)
REPEAT SETUP CHARGE:
EMPR, EMPRT & NERP: \$ 60.00 (P)
6. LESS THAN MINIMUM: \$200 (P)
7. STONE - in place of laser engraving
*minimum 50 pieces
Add \$ 4.80 (p) for Synthetic stone & instalation



Bendable PVC & Packaging



Popular for decorating cell phones, MP3 players and backpacks.

If you need a logo seen by a younger demographic, this is the hip new option!

Bendable PVC Phone Charms & Pins

Soft flexible PVC material for lapel pins, charms and key chains.

Lapel pins and charms available with military clutch, cell phone strap, key chain or ball chain.

	Size	100	300	500	1,000	3,000
PVC-3	3/4"	2.62	2.10	1.96	1.76	1.68
PVC-5	1"	2.92	2.40	2.18	2.06	1.98
PVC-6	1-1/4"	2.42	3.46	2.48	2.00	1.88
PVC-7	1-1/2"	3.96	3.60	2.84	2.48	2.40

(5P)

1. Pricing includes 4 colors
For each additional color add \$0.20(P)
2. SILK SCREEN SETUP: \$80.00(P) per color
3. LESS THAN MINIMUM: Not Available
4. TOOLING: 2D Mold fee \$180.00(P)
3D Mold fee \$240.00(P)
5. PRODUCTION TIME:
Typically 2-3 weeks after PO and proof approval
6. PRE-PRODUCTION SAMPLE:
Add \$ 160 (P)
7. Standard Attachment: Military Clutch included
For Key chain / Cell phone strap / Ball Chain add \$ \$0.38 (P)

Packaging



LPB

Large Hinged lucite box with black velour insert
1.65" x 1.65" x 0.70"

PB

Two-piece lucite box with red or black velour insert
1 1/8" x 1 1/8" x 7/8"



TRAN

Translucent plastic boxes with soft suede foam pads
1 5/8" x 1 5/8" x 1 3/8"



VBS

VB

Black Velvet Boxes

(shown with 1.25" pin)

VB 1 7/8" wide x 2 1/8" deep x 1 7/8" high

VB is shipped in a two piece protective cardboard box

VBS 1 5/8" wide x 1 5/8" deep x 1 1/16" high

VBS is shipped in a white protective cardboard sleeve

Packaging Options

Style	Price	Style	Price
VBS	2.42	BV	1.42
VB	5.30	PB	1.50
TRAN	1.60	LPB	2.40
			6(P)

Call customer service for additional box options.
Prices are applicable with pin orders only.
Some styles available with pin orders only.
Additional prices may apply for box only orders.



BV

Black or blue velvet drawstring bags
2" x 2 1/2"

Patches & Appliques



[See page 33 for our NEW Genuine Chenille Letters and logos](#)

Perfectmatch



Patches & Appliques

	Size	100	300	500	1,000	3,000	5,000	10,000	20,000
APQ 1	1"	Appliques			1.98	1.92	1.54	1.52	1.40
APQ 2	1 1/4"	Less than minimum available			2.36	2.35	1.76	1.74	1.62
APQ 3	1 1/2"	Call for details			2.66	2.60	2.22	2.2	2.06
E 1	2"	4.30	2.52	1.66	1.64	1.62	1.56		
E 2	2 1/2"	5.32	3.34	2.30	2.24	2.22	2.17		
E 3	3"	6.32	4.20	2.90	2.86	2.84	2.80		
E 4	3 1/2"	7.56	4.96	3.74	3.72	3.70	3.34		
E 5	4"	8.72	5.70	4.30	4.26	4.24	3.80		
E 6	4 1/2"	10.08	7.10	5.14	5.12	4.94	4.20		
E 7	5"	11.52	8.50	6.16	6.51	5.36	4.74		

Lettering not recommended for appliques up to 1 1/2". Lettering must be 1/8" or larger in height for Embroidered Patches 2-5 inches. (8P)

- EMBROIDERED PATCHES:**
Computer embroidered with merrow border. No tape charge. Twill background with rayon silk thread. Prices include up to 7 thread colors and up to 75% thread coverage.
- Add \$ 0.40 (P) for over 75% thread coverage.
Add \$ 0.20 (P) for each additional color.
Add \$ 0.20 (P) for metallic thread
Add \$ 0.60 (P) for heat seal backing
- APPLIQUÉS:**
100% embroidery area. Adhesive backside at no extra cost. Packaged on cards in poly bag.
*Less than minimum available.
- NORMAL PRODUCTION TIME: 3 Weeks**
- PRE-PRODUCTION SAMPLE: \$80 (X)**
Tape charge applies, contact customer service \$ 40.00 (X) rebated upon approval of sample for orders of 300 or more pieces.

Platings & Stones



- | | |
|---|---|
| <p>1. PLATING: 14K Gold, Platinum, or Copper Plate</p> <p>Antique finish Add \$ 0.20 (P)</p> <p>Black Metal finish Add \$ 0.20 (P)</p> <p>Dyed Black Metal Add \$ 0.24 (P)</p> | <p>3. SERIALIZING: Add \$ 0.98 ea (P)</p> <p>Standard Laser or Black Laser engraving.</p> <p>* Black laser gives more contrast.</p> <p>** Not available on all processes.</p> |
| <p>2. 14K SUPERIOR PLATING: Add \$ 0.80 (R)</p> <p>Double plated for deep rich plating with extra hand polishing on edges.</p> | <p>4. SYNTHETIC STONES:</p> <p>We use Swarovski Crystals.</p> <p>2pt Synthetic Diamond, Ruby, Emerald, etc. \$ 4.90 (R)</p> <p>Custom sizes available, contact customer service.</p> |



Stock Shapes

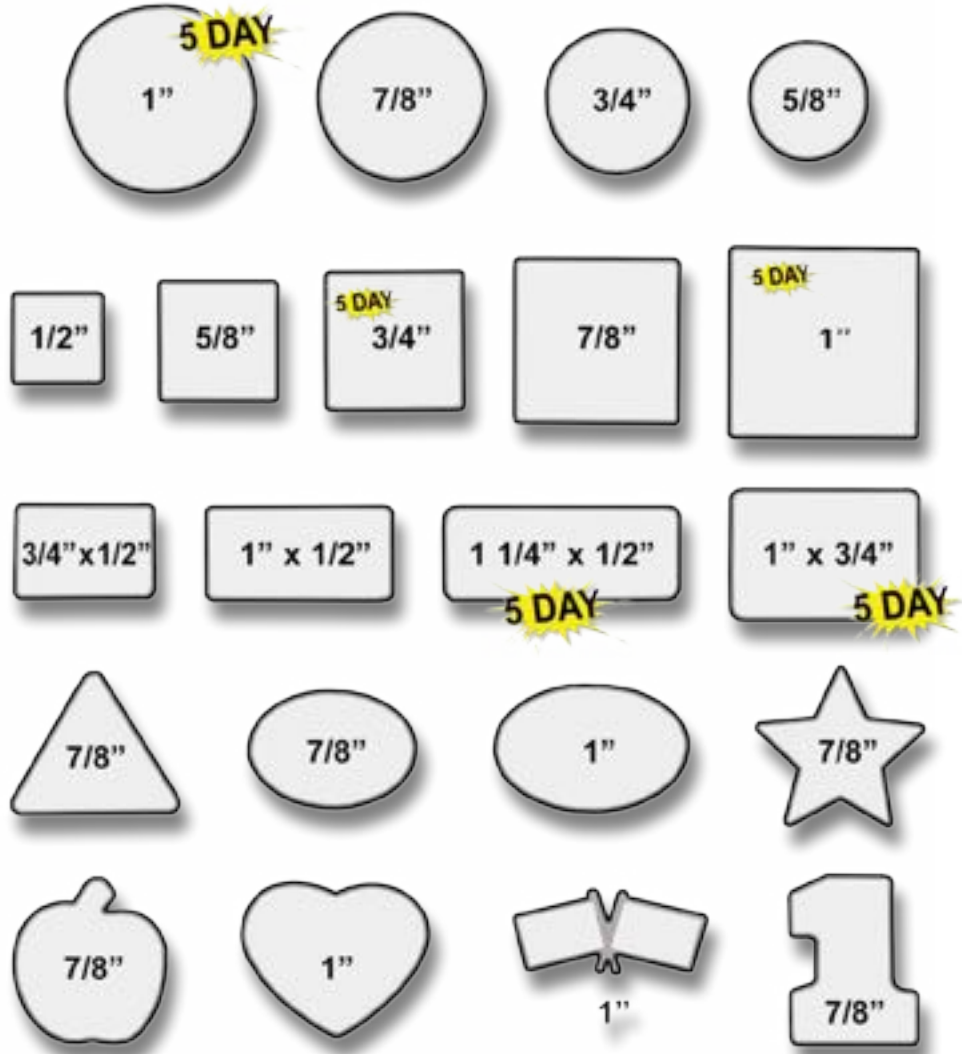
For Digital Printing on Cloisonné, Aluminum and Polished metal processes.

21 great shapes - Available in 14k Gold or Platinum plate, either as a solid metal surface or with a smooth Cloisonné surface.

5DAY process is available on marked shapes.

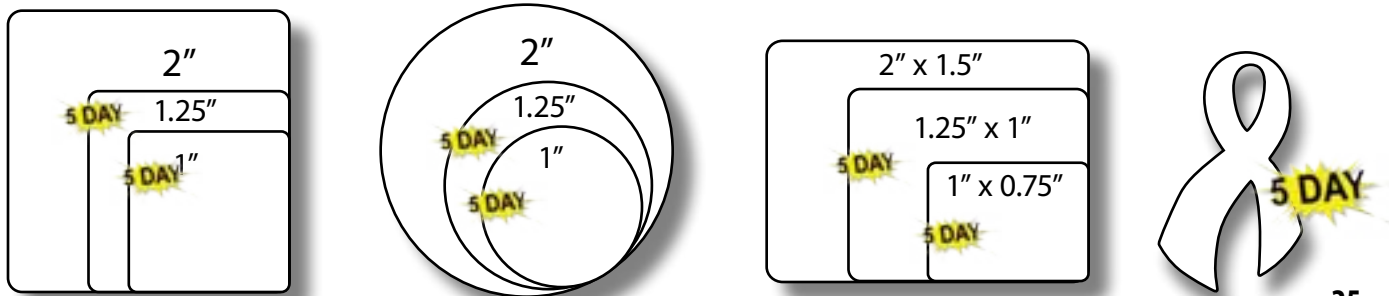
Printing on stock shapes offers a quick and cost effective way of delivering a high-quality product with a tight schedule.

Print on either a white Cloisonné or Aluminum background or a high polished metal background, in either 14K Gold or Platinum plate.



Stock Bottle Cap

Oversized Aluminum Stock Shapes



Attachments Available in 14k Gold or Platinum finish on select processes



Stick Pin A8



2 Loops no Jump Rings A22



2 Loops with 2 Jump Rings A16



4 Loops no Jump Rings A23



4 Loops with 2 Jump Rings A24



4 Loops with 4 Jump Rings A26



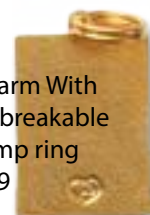
Charm With Regular Jump ring A10



Loose Magnet A30



Safety Pin A9



Charm With Unbreakable Jump ring A19



Bolo Tie BT



Diaper Pin ADP



Tie Bar A6



Zipper Pull A25



Screw Post A5



Cuff Links A7



Necklace 18" Chain A15



Post with Anti Rotation Spur

Chain Loop with Regular Jump Ring CHU



Chain Loop with Open Jump ring CHO



Shoe Tag STG



Tie Tack with Chain & Button Hole Bar A4



Deluxe Flat Clutch A3



Deluxe Ball Clutch A2



Military Clutch A1



Money Clip AMC

Perfectmatch



Retractable Badge Holder
1.2" Diameter (31mm)

Badge Holders & Retracts

Badge Holder Attachments

BBC	Bulldog Badge Clip	\$1.20 (P)
RBH	Retractable Plastic Badge Holder (minimum order 100)	\$1.10 (P)



Prices for Attachments

BOOKMARKS			KEY CHAINS		
BMA	2" Long	2.40	A11	Side screw with unbreakable jump ring	0.66
BMB	4" Long	2.60	A12	Split ring 1" with unbreakable jump ring	0.64
BMC	6" Long curved	1.00	CHN	Chain added to key chain cost	0.48
A27	Bars each loop	0.06	A30	Loose magnet attachment to hold emblem * Magnet Attachment NOT returnable.	1.20
A28	Bars each jump ring	0.20	A21	Magnetic backside (vinyl magnet)	0.40
A22	2 loops no jump ring	0.12	AMC	Money Clip	1.60
A16	2 loops with 2 jump rings	0.52	A15	Necklace 18" Chain	2.00
A23	4 loops with no jump rings	0.24	A9	Safety Pin	0.50
A24	4 loops with 2 jump rings	0.64	STG	Shoe Tag (each)	1.00
A26	4 loops with 4 jump rings	1.04	A8	Stick Pin with clutch	0.50
BT	Bolo Tie	1.50	S5	Genuine Gem Stones	*market-price
CHU	Chain loop with regular jump ring	0.60	S4	Genuine Blue Diamonds	*market-price
CHO	Chain loop with open jump ring	0.80	S2	Swarovski Crystals / Synthetic Gem Stones	4.90 (R)
A10	Charm loop with regular jump ring	0.34	SR	Stock rockers available for immediate delivery	2.60
A19	Charm loop with unbreakable jump ring	0.44	A2	Deluxe Ball Head clutch	0.64
A7	Cuff links (pair)	2.00	A3	Deluxe Flat Head clutch	0.64
ADP	3 inch Diaper Pin	1.38	A1	Military clutch (each additional clutch)	0.16
CDS	Dome top (curved top metal)	0.50	A4	Tie tack with chain & button bar	0.64
DFAT	Double face adhesive tape	0.20	A5	Screw posts	0.64
A13	Earrings (pair)	2.00	A6	Tie bars 2" x 3/16"	1.76
ETM	Extra thick metal	0.80	A29	Tie bars 2 1/4" x 7/16"	1.84
EH	Eyeglass holder	1.20	A31	Yellow plastic clutch	0.04
F	Flats (no attachment)	0.00		Unless otherwise marked all items	2(P)
GBM	Golf ball marker	1.30			
A25	Zipper pull with unbreakable jump ring	0.48			
MB	MASTER BAG charge	1.08			

General Information

Acknowledgments

All orders are acknowledged in writing. Please review the acknowledgment carefully and advise immediately if there are any discrepancies from your original instructions.

Artwork

Our preference is camera ready artwork 3-4 times the size of the final product.

Digital artwork must be at least the size of the final product @ 300 dpi. We accept PSD, ESP, PDF, JPEG, TIFF and Illustrator files.

Preferred type of digital artwork is flat jpg at 300 dpi or better of the final product.

Colors MUST be specified in writing as PMS for each color in a product. Specify as swatches next to artwork with written PMS reference.

Backside Imprint

Requires an additional tooling charge. Add \$ 0.40 (P) each run charge. Distributor imprint available at reduced rate.

Consecutive Numbers

See laser serializing on page 34

5-DAY processes

Actual production time is subject to current production load - email first to enquire on production time, based on quantity and shape required. Please note Perfectmatch is not a walk-in situation, we do not offer will-call - local shipping is available as UPS ground.

Corrections or Cancellations

An order in process is subject to costs incurred to date of cancellation, and a \$ 25.00 (X) cancellation fee.

Curved Top Metal

Convexed and shaped before the die is cut. Not to be confused with an epoxy dome. Add \$ 0.50 (P) each. Also, add an additional \$ 40.00 (R) tooling charge for 1" or smaller.

Delivery Time

Normal manufacturing time is required for shipment of order after approval of pre-production sample. See catalog page for selected process production times.

Double Face Adhesive Tape

Add \$ 0.20 (P) each.

Epoxy Dome

Transparent protective epoxy coat, covering top layer of emblem. Prices vary for different processes.

Please see catalog page for selected process.

Flats

Use emblem price on catalog page showing selected process.

Large Quantity Orders

Contact customer service.

Less Than Minimum

Add \$ 200.00 (P). See designated process for each LTM charge.

\$ 50.00 (P) LTM for all stock item orders under \$ 100.00 (P).

Packaging

Each item individually packaged in poly bag. See page 32 for packaging options, custom packaging available on request.

Paper Cards

Available upon request. Contact customer service for details.

Virtual Proofs

Free Artwork and Virtual Proof with all purchase orders, multiple changes to customer's art billable based on regular art rates.

Plating

See all plating options on page 34. Some platings are not available for all processes.

Perfectmatch

PMS Colors

No additional charge to match PMS colors in processes with PMS match. *Not available on all processes.

Pre-Production Sample

Add \$ 80.00 (X) plus applicable additional charges. \$ 40.00 (X) rebated upon approval of sample. Rebate not available under 300 pieces.

Repeat Orders

No tooling charge for EXACT repeat orders, repeat orders with change to artwork is treated as new orders.

NOTE: Tooling and screens are stored for 24 months / 2 years.

Repeat orders on products older than 2 years may be subject to tooling charges.

Rush Orders

Inquire with Customer Service, only available on some processes.

Shipping

F. O. B. Los Angeles, CA. Freight prepaid and added to invoice. We ship UPS ground.

For drop shipments add \$ 10.00 (X) per each location. Handling charges apply for 3rd party shipments

Unfortunately we can not offer FedEx or USPS shipping.

Stones

We feature Swarovski crystals for our synthetic stones. See page 34.



Tabs & Bars

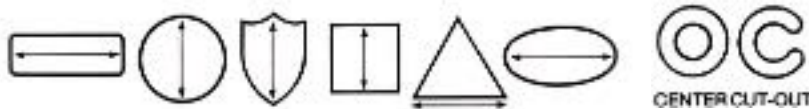
Custom Tabs and Custom Bars measured by largest dimension, use designated process page for prices.

See our stock rocker tabs on page 22 .

Tooling Charge

Tooling charge for interior design and each metal change. Measure largest dimension, and size or shape. A new die is required for each metal change including year changes, number changes, stones etc. and for Silk Screen outside shape.

1" and under	\$ 120.00
1 1/2" and under	\$ 160.00
Center cut-out per each hole	\$ 60.00
Loop tooling charge	\$ 60.00 (4R)



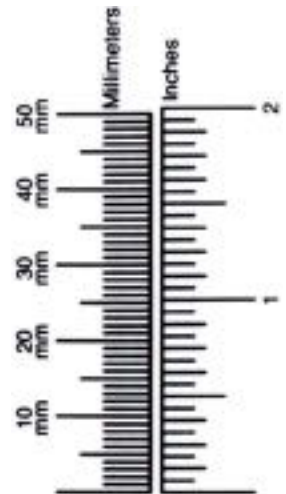
Emblem pricing is based on the largest dimension.

PAYMENT: Check & Money orders are accepted for invoice balances.

ALL Credit card payments are subject to a 5% processing charge, pay by check to avoid processing charge.

Credit card payments are not accepted on prepay accounts.

Interest is clearly defined on the invoice and **will** accrue on balances older than 30 days.



Trademarks

Perfectmatch assumes distributors are authorized to use trademarks presented to use for reproduction.

We assume no liability in trademark or copyright disputes.

In a trademark dispute, Perfectmatch will on request surrender merchandise to trademark holder.

The distributor placing the order will be liable for production cost.



Classic Pin Collection

Lasered Cloisonne	6-7
Hard Fired Cloisonne	8-9
High Hand Polished Metal	10-11
Soft Enamel	12-13
DIGITAL PINS	16-17
Color Printed Wood Lapel Pins	14

5 Day Production

Digital Printing on Stock Shapes	15
Employee Recognition	18-19
Color Printed Wood Lapel Pins	14

Stock Shapes	25
Genuine Chenille Patches	23
Embroidered Patches & Appliques	22-23
PVC Cell Phone Charms	20
PVC Lapel Pins & Key Chains	20
Sterling Silver and Precious Metals	Call for Details
Made in the USA Die-Struck Pins	Call for Details

Owner
Bo Lorentzen
Committed to
Distributors



Supplier of Award Winning
Lapel Pins since 1985



2023